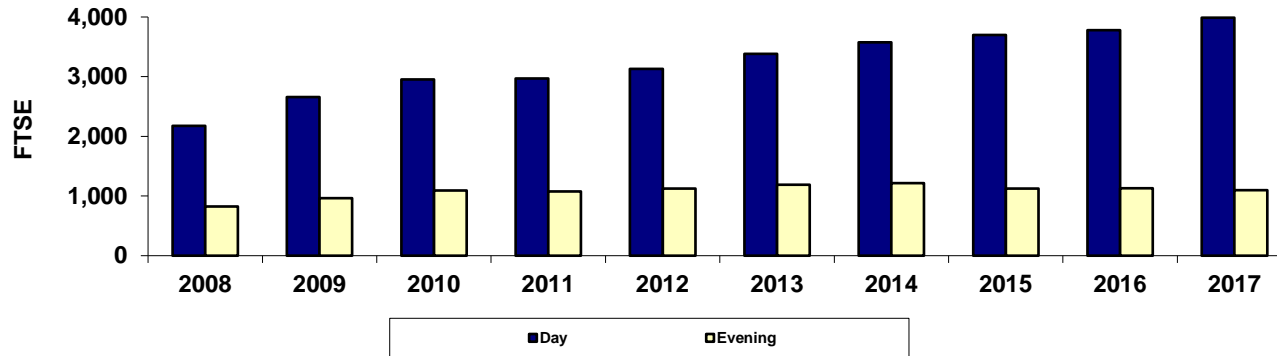


## Estrella Mountain Community College Fall 45th Day Day/Evening FTSE



<u>Year</u>	<u>2008</u>	<u>2009</u>	<u>2010</u>	<u>2011</u>	<u>2012</u>	<u>2013</u>	<u>2014</u>	<u>2015</u>	<u>2016</u>	<u>2017</u>
<b>Day</b>	2,177.3	2,657.7	2,950.8	2,971.9	3,128.4	3,380.1	3,574.3	3,698.7	3,776.5	3,988.0
<b>Evening</b>	824.9	963.4	1,093.9	1,076.1	1,123.3	1,189.3	1,216.9	1,126.6	1,129.3	1,097.3
<b>Total</b>	<b>3,002.2</b>	<b>3,621.1</b>	<b>4,044.7</b>	<b>4,047.9</b>	<b>4,251.7</b>	<b>4,569.4</b>	<b>4,791.2</b>	<b>4,825.3</b>	<b>4,905.8</b>	<b>5,085.4</b>
<b>% Day</b>	72.5%	73.4%	73.0%	73.4%	73.6%	74.0%	74.6%	76.7%	77.0%	78.4%
<b>% Evening</b>	27.5%	26.6%	27.0%	26.6%	26.4%	26.0%	25.4%	23.3%	23.0%	21.6%

Due to rounding, the sum of the numbers may not equal the Total.

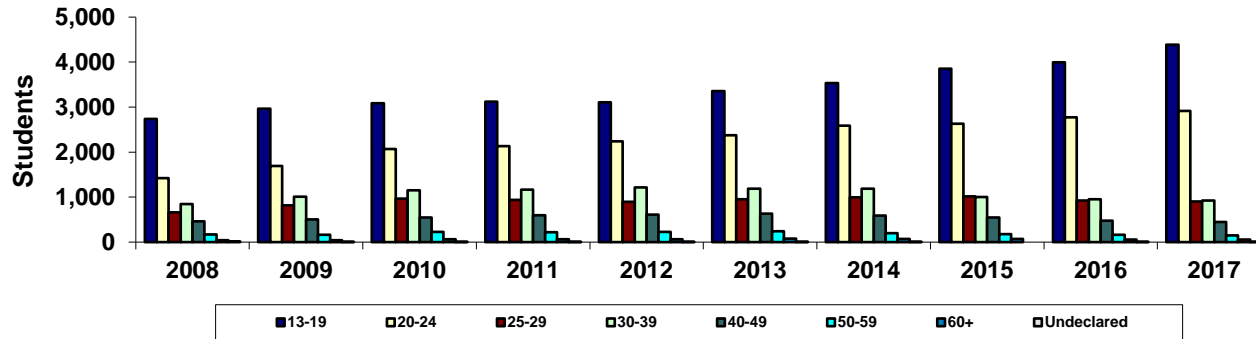
Print in landscape for best results

Last updated on March 6, 2018

Source: Official 45th Day FTSE numbers as reported by the colleges after manual adjustments (unaudited).

Maricopa Community College District • Office of Institutional Effectiveness • Maricopa Trends

## Estrella Mountain Community College Fall 45th Day Age Groups



<u>Year</u>	<u>2008</u>	<u>2009</u>	<u>2010</u>	<u>2011</u>	<u>2012</u>	<u>2013</u>	<u>2014</u>	<u>2015</u>	<u>2016</u>	<u>2017</u>
<b>13-19</b>	2,737	2,968	3,083	3,124	3,105	3,358	3,531	3,857	3,995	4,389
<b>20-24</b>	1,419	1,689	2,068	2,130	2,237	2,377	2,591	2,633	2,773	2,915
<b>25-29</b>	661	814	970	938	899	950	993	1,018	923	903
<b>30-39</b>	849	1,009	1,149	1,165	1,215	1,187	1,186	1,004	953	924
<b>40-49</b>	463	508	550	599	614	634	588	545	479	451
<b>50-59</b>	172	164	228	222	227	243	202	174	160	151
<b>60+</b>	44	43	66	63	63	81	71	72	58	53
<b>Undeclared</b>	13	7	8	2	1	2	2	0	3	2
<b>Sum of Colleges*</b>	<b>6,358</b>	<b>7,202</b>	<b>8,122</b>	<b>8,243</b>	<b>8,361</b>	<b>8,832</b>	<b>9,164</b>	<b>9,303</b>	<b>9,344</b>	<b>9,788</b>
<b>% 13-19</b>	43.0%	41.2%	38.0%	37.9%	37.1%	38.0%	38.5%	41.5%	42.8%	44.8%
<b>% 20-24</b>	22.3%	23.5%	25.5%	25.8%	26.8%	26.9%	28.3%	28.3%	29.7%	29.8%
<b>% 25-29</b>	10.4%	11.3%	11.9%	11.4%	10.8%	10.8%	10.8%	10.9%	9.9%	9.2%
<b>% 30-39</b>	13.4%	14.0%	14.1%	14.1%	14.5%	13.4%	12.9%	10.8%	10.2%	9.4%
<b>% 40-49</b>	7.3%	7.1%	6.8%	7.3%	7.3%	7.2%	6.4%	5.9%	5.1%	4.6%
<b>% 50-59</b>	2.7%	2.3%	2.8%	2.7%	2.7%	2.8%	2.2%	1.9%	1.7%	1.5%
<b>% 60+</b>	0.7%	0.6%	0.8%	0.8%	0.8%	0.9%	0.8%	0.8%	0.6%	0.5%
<b>% Undeclared</b>	0.2%	0.1%	0.1%	0.0%	0.0%	0.0%	0.0%	0.0%	0.0%	0.0%

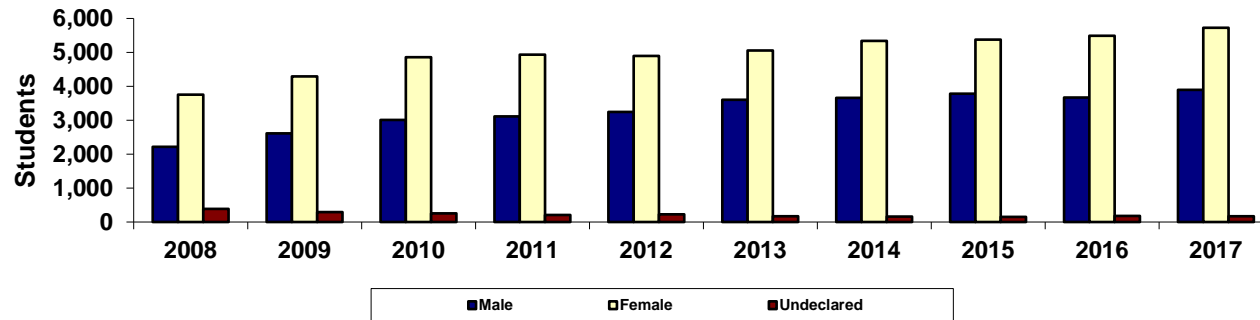
Print in landscape for best results

Source: Official 45th Day headcount as reported by colleges.

Maricopa Community College District • Office of Institutional Effectiveness • Maricopa Trends

Last updated on March 6, 2018

## Estrella Mountain Community College Fall 45th Day Gender



<u>Year</u>	<u>2008</u>	<u>2009</u>	<u>2010</u>	<u>2011</u>	<u>2012</u>	<u>2013</u>	<u>2014</u>	<u>2015</u>	<u>2016</u>	<u>2017</u>
<b>Male</b>	2,217	2,609	3,011	3,109	3,247	3,599	3,659	3,780	3,669	3,896
<b>Female</b>	3,752	4,296	4,857	4,930	4,892	5,059	5,342	5,373	5,494	5,723
<b>Undeclared</b>	389	297	254	204	222	174	163	150	181	169
<b>Total</b>	<b>6,358</b>	<b>7,202</b>	<b>8,122</b>	<b>8,243</b>	<b>8,361</b>	<b>8,832</b>	<b>9,164</b>	<b>9,303</b>	<b>9,344</b>	<b>9,788</b>
<b>% Male</b>	34.9%	36.2%	37.1%	37.7%	38.8%	40.7%	39.9%	40.6%	39.3%	39.8%
<b>% Female</b>	59.0%	59.7%	59.8%	59.8%	58.5%	57.3%	58.3%	57.8%	58.8%	58.5%
<b>% Undeclared</b>	6.1%	4.1%	3.1%	2.5%	2.7%	2.0%	1.8%	1.6%	1.9%	1.7%

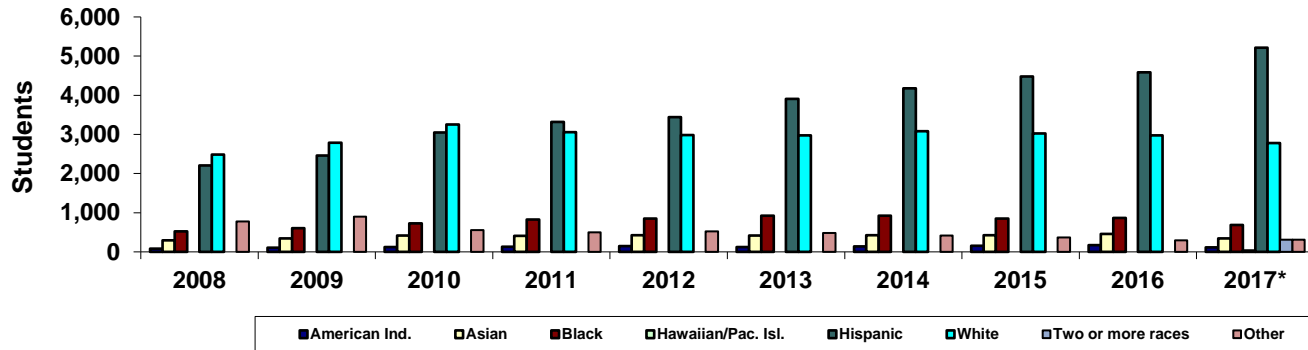
Print in landscape for best results

Last updated on March 6, 2018

Source: Official 45th Day headcount as reported by colleges.

Maricopa Community College District • Office of Institutional Effectiveness • Maricopa Trends

## Estrella Mountain Community College Fall 45th Day Ethnicity



Year	2008	2009	2010	2011	2012	2013	2014	2015	2016	2017*
American Ind.	83	103	124	129	146	125	137	153	168	118
Asian	291	340	415	408	423	417	428	425	454	343
Black	521	608	725	829	848	927	921	854	870	686
Hawaiian/Pac. Isl.	0	0	0	0	0	0	0	0	0	33
Hispanic	2,206	2,461	3,048	3,321	3,440	3,903	4,179	4,477	4,587	5,211
White	2,481	2,788	3,257	3,061	2,984	2,974	3,085	3,026	2,972	2,775
Two or more races	0	0	0	0	0	0	0	0	0	314
Other	776	902	553	495	520	486	414	368	293	308
<b>Total</b>	<b>6,358</b>	<b>7,202</b>	<b>8,122</b>	<b>8,243</b>	<b>8,361</b>	<b>8,832</b>	<b>9,164</b>	<b>9,303</b>	<b>9,344</b>	<b>9,788</b>

% American Ind.	1.3%	1.4%	1.5%	1.6%	1.7%	1.4%	1.5%	1.6%	1.8%	1.2%
% Asian	4.6%	4.7%	5.1%	4.9%	5.1%	4.7%	4.7%	4.6%	4.9%	3.5%
% Black	8.2%	8.4%	8.9%	10.1%	10.1%	10.5%	10.1%	9.2%	9.3%	7.0%
% Hawaiian/Pac. Isl.	0.0%	0.0%	0.0%	0.0%	0.0%	0.0%	0.0%	0.0%	0.0%	0.3%
% Hispanic	34.7%	34.2%	37.5%	40.3%	41.1%	44.2%	45.6%	48.1%	49.1%	53.2%
% White	39.0%	38.7%	40.1%	37.1%	35.7%	33.7%	33.7%	32.5%	31.8%	28.4%
% Two or more races	0.0%	0.0%	0.0%	0.0%	0.0%	0.0%	0.0%	0.0%	0.0%	3.2%
% Other	12.2%	12.5%	6.8%	6.0%	6.2%	5.5%	4.5%	4.0%	3.1%	3.1%

Print in landscape for best results

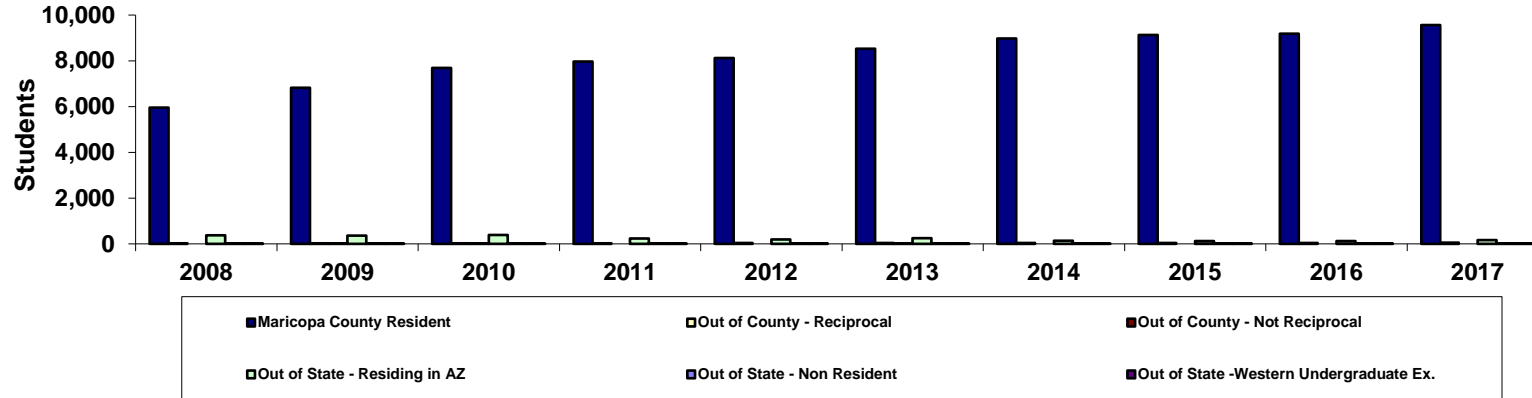
Last updated on March 6, 2018

Source: Official 45th Day headcount as reported by colleges.

Maricopa Community College District • Office of Institutional Effectiveness • Maricopa Trends

\*Beginning in Fall 2017, race-ethnicity categories changed to provide counts for "Hawaiian/Pacific Islander" and "Two or more races."

## Estrella Mountain Community College Fall 45th Day Residency



<u>Year</u>	<u>2008</u>	<u>2009</u>	<u>2010</u>	<u>2011</u>	<u>2012</u>	<u>2013</u>	<u>2014</u>	<u>2015</u>	<u>2016</u>	<u>2017</u>
<b>Maricopa County Resident</b>	5,959	6,818	7,686	7,972	8,123	8,529	8,978	9,125	9,184	9,560
<b>Out of County - Reciprocal</b>	18	22	30	28	38	40	41	43	36	47
<b>Out of County - Not Reciprocal</b>	0	1	2	0	0	1	0	0	0	0
<b>Out of State - Residing in AZ</b>	372	355	390	238	190	251	132	127	118	168
<b>Out of State - Non Resident</b>	5	5	10	1	2	3	4	2	1	2
<b>Out of State -Western Undergraduate Ex.</b>	4	1	4	4	8	8	9	6	5	11
<b>Total</b>	<b>6,358</b>	<b>7,202</b>	<b>8,122</b>	<b>8,243</b>	<b>8,361</b>	<b>8,832</b>	<b>9,164</b>	<b>9,303</b>	<b>9,344</b>	<b>9,788</b>
<b>%Maricopa County Resident</b>	93.7%	94.7%	94.6%	96.7%	97.2%	96.6%	98.0%	98.1%	98.3%	97.7%
<b>%Out of County - Reciprocal</b>	0.3%	0.3%	0.4%	0.3%	0.5%	0.5%	0.4%	0.5%	0.4%	0.5%
<b>%Out of County - Not Reciprocal</b>	0.0%	0.0%	0.0%	0.0%	0.0%	0.0%	0.0%	0.0%	0.0%	0.0%
<b>%Out of State - Residing in AZ</b>	5.9%	4.9%	4.8%	2.9%	2.3%	2.8%	1.4%	1.4%	1.3%	1.7%
<b>%Out of State - Non Resident</b>	0.1%	0.1%	0.1%	0.0%	0.0%	0.0%	0.0%	0.0%	0.0%	0.0%
<b>%Out of State -Western Undergraduate Ex.</b>	0.1%	0.0%	0.0%	0.0%	0.1%	0.1%	0.1%	0.1%	0.1%	0.1%

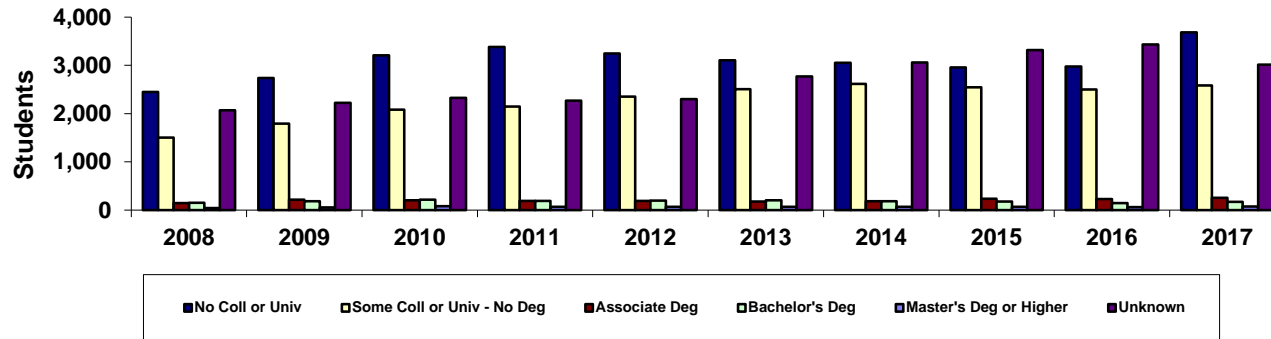
Print in landscape for best results

Source: Official 45th Day headcount as reported by colleges.

Maricopa Community College District • Office of Institutional Effectiveness • Maricopa Trends

Last updated on March 6, 2018

## Estrella Mountain Community College Fall 45th Day Admission Status



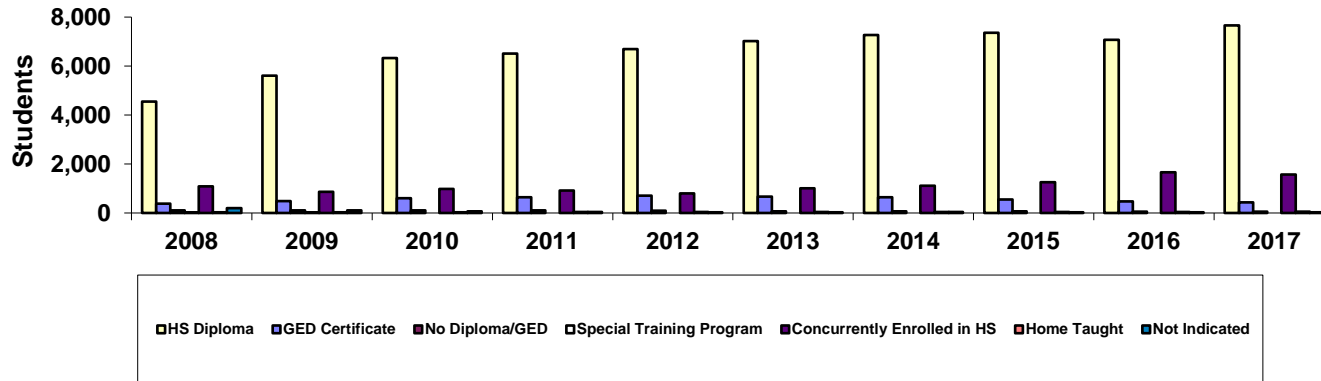
<u>Year</u>	<u>2008</u>	<u>2009</u>	<u>2010</u>	<u>2011</u>	<u>2012</u>	<u>2013</u>	<u>2014</u>	<u>2015</u>	<u>2016</u>	<u>2017</u>
<b>No Coll or Univ</b>	2,448	2,736	3,207	3,383	3,250	3,107	3,051	2,957	2,975	3,685
<b>Some Coll or Univ - No Deg</b>	1,502	1,793	2,084	2,146	2,354	2,505	2,615	2,543	2,498	2,587
<b>Associate Deg</b>	146	217	206	188	191	179	186	236	231	252
<b>Bachelor's Deg</b>	151	182	219	191	197	202	186	180	144	170
<b>Master's Deg or Higher</b>	42	53	82	68	71	66	66	68	60	76
<b>Unknown</b>	2,069	2,221	2,324	2,267	2,298	2,773	3,060	3,319	3,436	3,018
<b>Total</b>	<b>6,358</b>	<b>7,202</b>	<b>8,122</b>	<b>8,243</b>	<b>8,361</b>	<b>8,832</b>	<b>9,164</b>	<b>9,303</b>	<b>9,344</b>	<b>9,788</b>

<b>% No Coll or Univ</b>	38.5%	38.0%	39.5%	41.0%	38.9%	35.2%	33.3%	31.8%	31.8%	37.6%
<b>% Some Coll or Univ - No Deg</b>	23.6%	24.9%	25.7%	26.0%	28.2%	28.4%	28.5%	27.3%	26.7%	26.4%
<b>% Associate Deg</b>	2.3%	3.0%	2.5%	2.3%	2.3%	2.0%	2.0%	2.5%	2.5%	2.6%
<b>% Bachelor's Deg</b>	2.4%	2.5%	2.7%	2.3%	2.4%	2.3%	2.0%	1.9%	1.5%	1.7%
<b>% Master's Deg or Higher</b>	0.7%	0.7%	1.0%	0.8%	0.8%	0.7%	0.7%	0.7%	0.6%	0.8%
<b>% Unknown</b>	32.5%	30.8%	28.6%	27.5%	27.5%	31.4%	33.4%	35.7%	36.8%	30.8%

Print in landscape for best results  
 Source: Official 45th Day headcount as reported by colleges.  
 Maricopa Community College District • Office of Institutional Effectiveness • Maricopa Trends

Last updated on March 6, 2018

## Estrella Mountain Community College Fall 45th Day High School Status



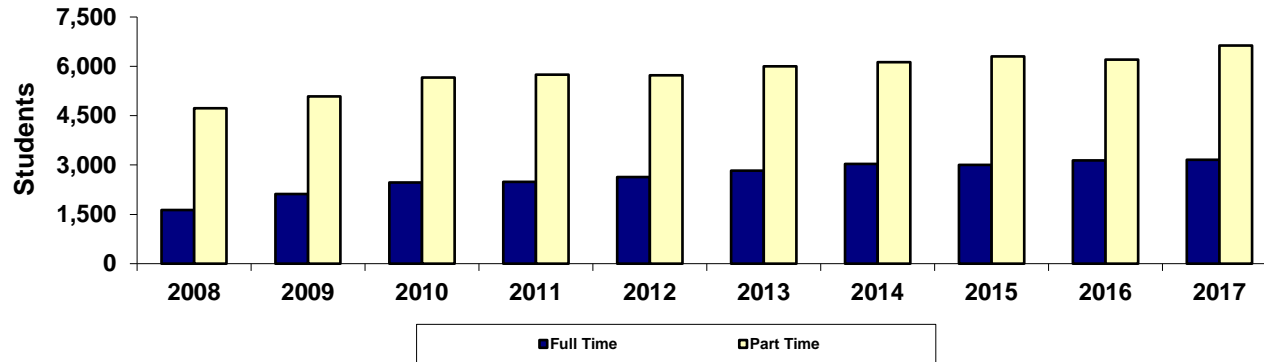
<u>Year</u>	<u>2008</u>	<u>2009</u>	<u>2010</u>	<u>2011</u>	<u>2012</u>	<u>2013</u>	<u>2014</u>	<u>2015</u>	<u>2016</u>	<u>2017</u>
<b>HS Diploma</b>	4,555	5,609	6,333	6,504	6,696	7,014	7,264	7,364	7,077	7,654
<b>GED Certificate</b>	381	488	609	645	709	672	644	553	478	430
<b>No Diploma/GED</b>	112	101	102	101	90	72	67	63	50	53
<b>Special Training Program</b>	1	1	0	0	0	0	0	0	0	0
<b>Concurrently Enrolled in HS</b>	1,085	861	978	914	795	1,010	1,111	1,254	1,668	1,569
<b>Home Taught</b>	24	30	29	38	37	38	43	41	46	49
<b>Not Indicated</b>	200	112	71	41	34	26	35	28	25	33
<b>Total</b>	<b>6,358</b>	<b>7,202</b>	<b>8,122</b>	<b>8,243</b>	<b>8,361</b>	<b>8,832</b>	<b>9,164</b>	<b>9,303</b>	<b>9,344</b>	<b>9,788</b>

<b>%HS Diploma</b>	71.6%	77.9%	78.0%	78.9%	80.1%	79.4%	79.3%	79.2%	75.7%	78.2%
<b>%GED Certificate</b>	6.0%	6.8%	7.5%	7.8%	8.5%	7.6%	7.0%	5.9%	5.1%	4.4%
<b>%No Diploma/GED</b>	1.8%	1.4%	1.3%	1.2%	1.1%	0.8%	0.7%	0.7%	0.5%	0.5%
<b>%Special Training Program</b>	0.0%	0.0%	0.0%	0.0%	0.0%	0.0%	0.0%	0.0%	0.0%	0.0%
<b>%Concurrently Enrolled in HS</b>	17.1%	12.0%	12.0%	11.1%	9.5%	11.4%	12.1%	13.5%	17.9%	16.0%
<b>%Home Taught</b>	0.4%	0.4%	0.4%	0.5%	0.4%	0.4%	0.5%	0.4%	0.5%	0.5%
<b>%Not Indicated</b>	3.1%	1.6%	0.9%	0.5%	0.4%	0.3%	0.4%	0.3%	0.3%	0.3%





## Estrella Mountain Community College Fall 45th Day Academic Load (Full and Part Time)



<u>Year</u>	<u>2008</u>	<u>2009</u>	<u>2010</u>	<u>2011</u>	<u>2012</u>	<u>2013</u>	<u>2014</u>	<u>2015</u>	<u>2016</u>	<u>2017</u>
<b>Full Time</b>	1,629	2,118	2,465	2,492	2,629	2,828	3,033	3,003	3,144	3,156
<b>Part Time</b>	4,729	5,084	5,657	5,751	5,732	6,004	6,131	6,300	6,200	6,632
<b>Total</b>	<b>6,358</b>	<b>7,202</b>	<b>8,122</b>	<b>8,243</b>	<b>8,361</b>	<b>8,832</b>	<b>9,164</b>	<b>9,303</b>	<b>9,344</b>	<b>9,788</b>
<b>% Full Time</b>	25.6%	29.4%	30.3%	30.2%	31.4%	32.0%	33.1%	32.3%	33.6%	32.2%
<b>% Part Time</b>	74.4%	70.6%	69.7%	69.8%	68.6%	68.0%	66.9%	67.7%	66.4%	67.8%

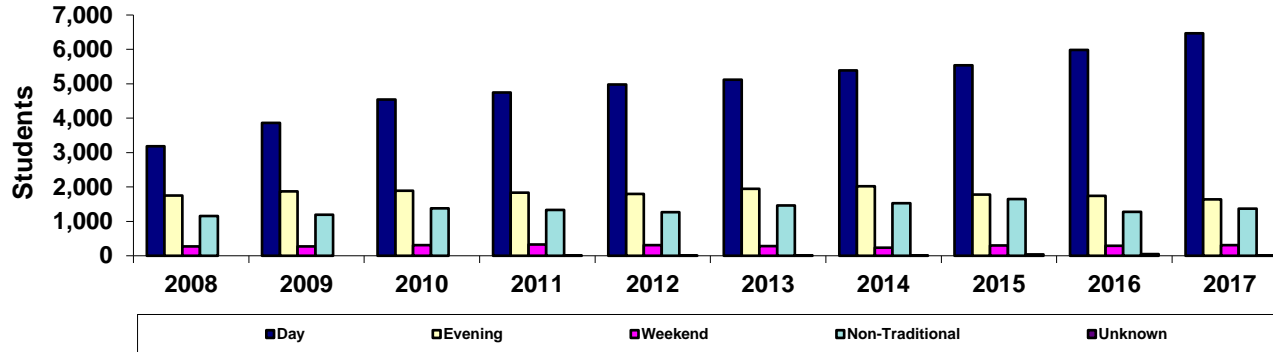
Print in landscape for best results

Last updated on March 6, 2018

Source: Official 45th Day headcount as reported by colleges.

Maricopa Community College District • Office of Institutional Effectiveness • Maricopa Trends

## Estrella Mountain Community College Fall 45th Day Headcount by Primary Time of Attendance



<u>Year</u>	<u>2008</u>	<u>2009</u>	<u>2010</u>	<u>2011</u>	<u>2012</u>	<u>2013</u>	<u>2014</u>	<u>2015</u>	<u>2016</u>	<u>2017</u>
<b>Day</b>	3,184	3,862	4,541	4,745	4,982	5,123	5,385	5,540	5,980	6,468
<b>Evening</b>	1,752	1,871	1,892	1,831	1,802	1,949	2,019	1,783	1,746	1,637
<b>Weekend</b>	270	276	310	325	305	279	231	299	290	310
<b>Non-Traditional</b>	1,152	1,193	1,379	1,336	1,269	1,467	1,528	1,645	1,277	1,368
<b>Unknown</b>	0	0	0	6	3	14	1	36	51	5
<b>Total</b>	<b>6,358</b>	<b>7,202</b>	<b>8,122</b>	<b>8,243</b>	<b>8,361</b>	<b>8,832</b>	<b>9,164</b>	<b>9,303</b>	<b>9,344</b>	<b>9,788</b>
<b>% Day</b>	50.1%	53.6%	55.9%	57.6%	59.6%	58.0%	58.8%	59.6%	64.0%	66.1%
<b>% Evening</b>	27.6%	26.0%	23.3%	22.2%	21.6%	22.1%	22.0%	19.2%	18.7%	16.7%
<b>%Weekend</b>	4.2%	3.8%	3.8%	3.9%	3.6%	3.2%	2.5%	3.2%	3.1%	3.2%
<b>%Non-Traditional</b>	18.1%	16.6%	17.0%	16.2%	15.2%	16.6%	16.7%	17.7%	13.7%	14.0%
<b>%Unknown</b>	0.0%	0.0%	0.0%	0.1%	0.0%	0.2%	0.0%	0.4%	0.5%	0.1%

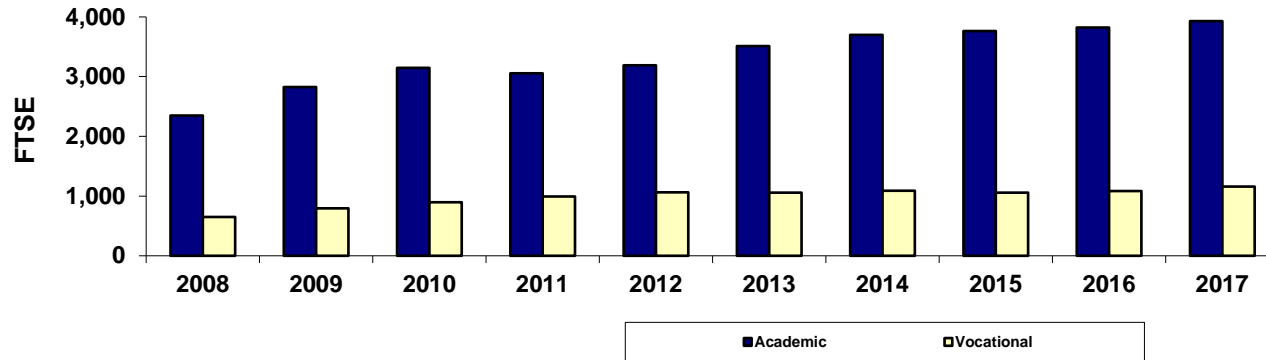
Print in landscape for best results

Last updated on March 6, 2018

Source: Official 45th Day headcount as reported by colleges.

Maricopa Community College District • Office of Institutional Effectiveness • Maricopa Trends

## Estrella Mountain Community College Fall 45th Day Academic/Vocational FTSE



<u>Year</u>	<u>2008</u>	<u>2009</u>	<u>2010</u>	<u>2011</u>	<u>2012</u>	<u>2013</u>	<u>2014</u>	<u>2015</u>	<u>2016</u>	<u>2017</u>
<b>Academic</b>	2,350.5	2,824.5	3,148.4	3,056.3	3,188.7	3,514.3	3,699.2	3,765.9	3,823.1	3,927.3
<b>Vocational</b>	651.7	796.6	896.3	991.7	1,063.0	1,055.1	1,092.0	1,059.3	1,082.7	1,158.1
<b>Total</b>	<b>3,002.2</b>	<b>3,621.1</b>	<b>4,044.7</b>	<b>4,047.9</b>	<b>4,251.7</b>	<b>4,569.4</b>	<b>4,791.2</b>	<b>4,825.3</b>	<b>4,905.8</b>	<b>5,085.4</b>
<b>% Academic</b>	78.3%	78.0%	77.8%	75.5%	75.0%	76.9%	77.2%	78.0%	77.9%	77.2%
<b>% Vocational</b>	21.7%	22.0%	22.2%	24.5%	25.0%	23.1%	22.8%	22.0%	22.1%	22.8%

Due to rounding, the sum of the numbers may not equal the Total.

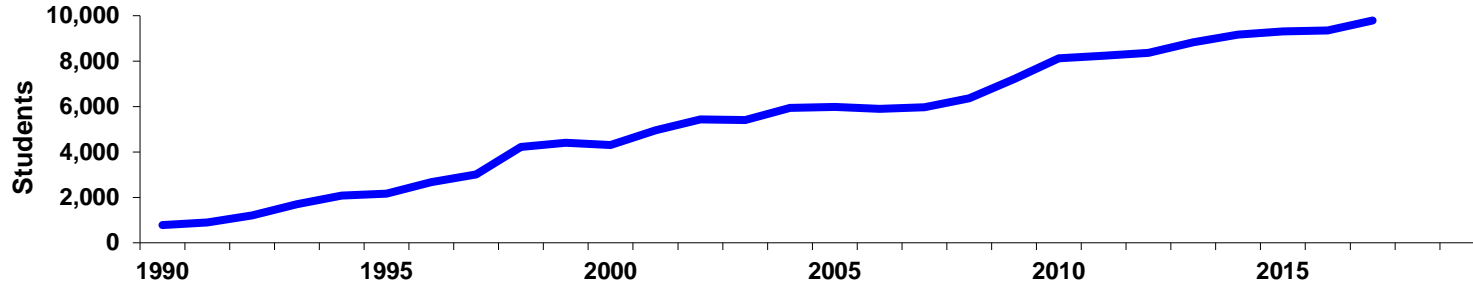
Print in landscape for best results

Last updated on March 6, 2018

Source: Official 45th Day FTSE numbers as reported by the colleges after manual adjustments (unaudited).

Maricopa Community College District • Office of Institutional Effectiveness • Maricopa Trends

## Estrella Mountain Community College Fall 45th Day Historical Headcount



Year	<u>1990</u>	<u>1991</u>	<u>1992</u>	<u>1993</u>	<u>1994</u>	<u>1995</u>	<u>1996</u>	<u>1997</u>	<u>1998</u>	<u>1999</u>
Total	780	896	1,201	1,701	2,074	2,159	2,677	3,007	4,222	4,400
% Change	0	0	34.0%	41.6%	21.9%	4.1%	24.0%	12.3%	40.4%	4.2%

Year	<u>2000</u>	<u>2001</u>	<u>2002</u>	<u>2003</u>	<u>2004</u>	<u>2005</u>	<u>2006</u>	<u>2007</u>	<u>2008</u>	<u>2009</u>
Total	4,300	4,958	5,439	5,410	5,947	5,978	5,894	5,973	6,358	7,202
% Change	-2.3%	15.3%	9.7%	-0.5%	9.9%	0.5%	-1.4%	1.3%	6.4%	13.3%

Year	<u>2010</u>	<u>2011</u>	<u>2012</u>	<u>2013</u>	<u>2014</u>	<u>2015</u>	<u>2016</u>	<u>2017</u>		
Total	8,122	8,243	8,361	8,832	9,164	9,303	9,344	9,788		
% Change	12.8%	1.5%	1.4%	5.6%	3.8%	1.5%	0.4%	4.8%		

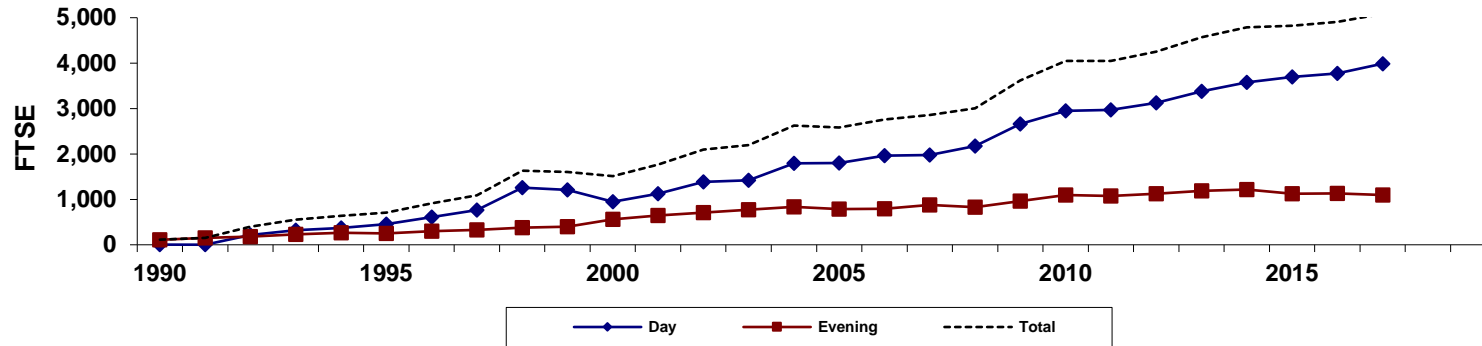
Print in landscape for best results

Last updated on March 6, 2018

Source: Official 45th Day headcount as reported by colleges.

Maricopa Community College District • Office of Institutional Effectiveness • Maricopa Trends

## Estrella Mountain Community College Fall 45th Day Historical Day/Evening FTSE



Year	1990	1991	1992	1993	1994	1995	1996	1997	1998	1999
Day	3.1	1.8	216.9	319.9	370.9	452.2	609.9	761.4	1,259.9	1,207.0
% Change	0.0%	-41.9%	11950.0%	47.5%	15.9%	21.9%	34.9%	24.8%	65.5%	-4.2%
Evening	110.1	152.6	178.5	231.1	267.6	253.8	303.1	330.2	374.7	395.4
% Change	0.0%	38.6%	17.0%	29.5%	15.8%	-5.2%	19.4%	8.9%	13.5%	5.5%
<b>Total</b>	<b>113.2</b>	<b>154.4</b>	<b>395.4</b>	<b>551.0</b>	<b>638.5</b>	<b>706.0</b>	<b>913.0</b>	<b>1,091.6</b>	<b>1,634.6</b>	<b>1,602.4</b>
% Change	0	0	156.1%	39.4%	15.9%	10.6%	29.3%	19.6%	49.7%	-2.0%

Year	2000	2001	2002	2003	2004	2005	2006	2007	2008	2009
Day	946.3	1,121.4	1,386.6	1,420.4	1,790.3	1,799.5	1,963.3	1,976.7	2,177.3	2,657.7
% Change	-21.6%	18.5%	23.6%	2.4%	26.0%	0.5%	9.1%	0.7%	10.1%	22.1%
Evening	562.6	644.6	709.1	773.1	833.3	782.4	794.9	878.3	824.9	963.4
% Change	42.3%	14.6%	10.0%	9.0%	7.8%	-6.1%	1.6%	10.5%	-6.1%	16.8%
<b>Total</b>	<b>1,508.9</b>	<b>1,766.0</b>	<b>2,095.7</b>	<b>2,193.6</b>	<b>2,623.6</b>	<b>2,581.9</b>	<b>2,758.2</b>	<b>2,855.1</b>	<b>3,002.2</b>	<b>3,621.1</b>
% Change	-5.8%	17.0%	18.7%	4.7%	19.6%	-1.6%	6.8%	3.5%	5.2%	20.6%

Year	2010	2011	2012	2013	2014	2015	2016	2017
Day	2,950.8	2,971.9	3,128.4	3,380.1	3,574.3	3,698.7	3,776.5	3,988.0
% Change	11.0%	0.7%	5.3%	8.0%	5.7%	3.5%	2.1%	5.6%
Evening	1,093.9	1,076.1	1,123.3	1,189.3	1,216.9	1,126.6	1,129.3	1,097.3
% Change	13.5%	-1.6%	4.4%	5.9%	2.3%	-7.4%	0.2%	-2.8%
<b>Total</b>	<b>4,044.7</b>	<b>4,047.9</b>	<b>4,251.7</b>	<b>4,569.4</b>	<b>4,791.2</b>	<b>4,825.3</b>	<b>4,905.8</b>	<b>5,085.4</b>
% Change	11.7%	0.1%	5.0%	7.5%	4.9%	0.7%	1.7%	3.7%

Due to rounding, the sum of the numbers may not equal the Total.

Print in landscape for best results

Last updated on March 6, 2018

Source: Official 45th Day FTSE numbers as reported by the colleges after manual adjustments (unaudited).

